



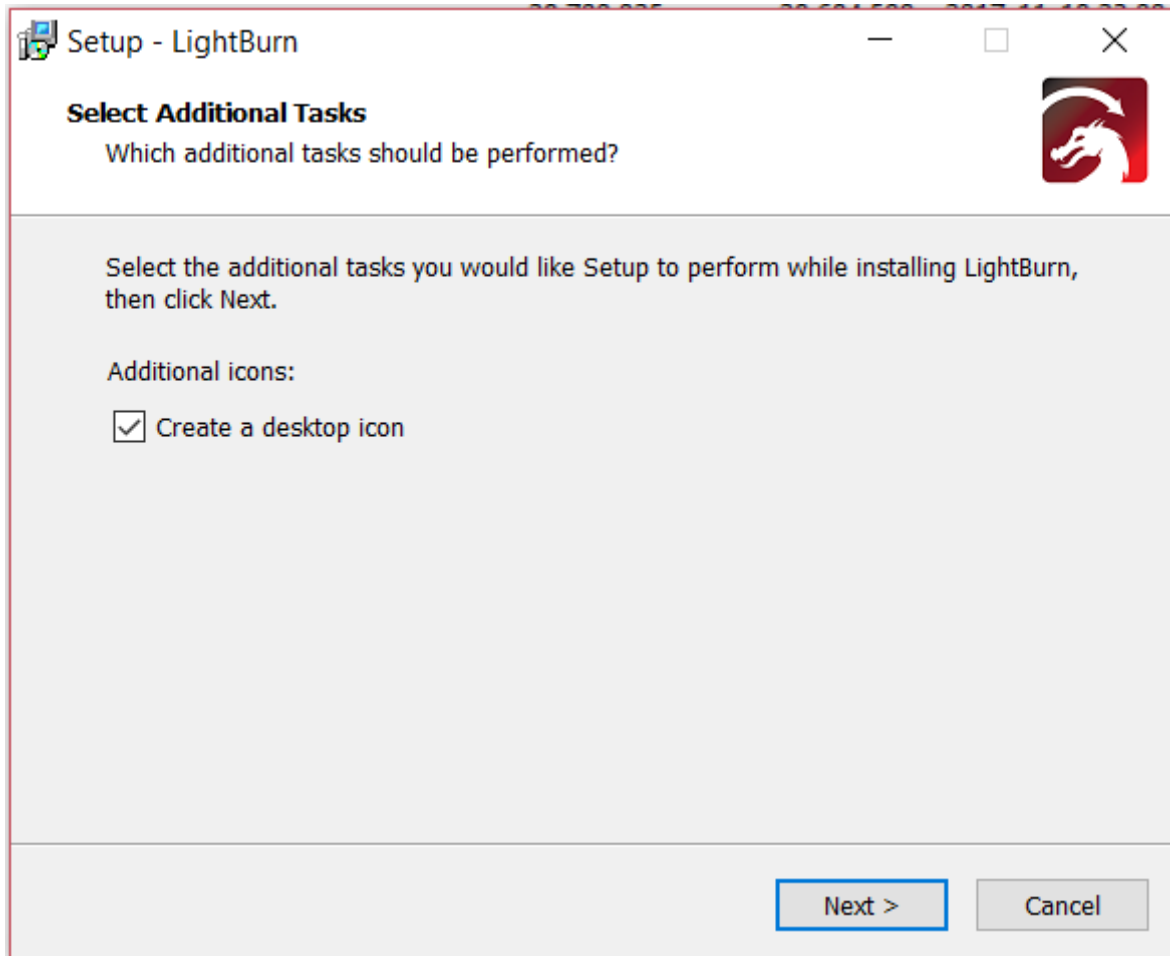
## Installation of LightBurn for LS Machines

---

608 Trestle Point  
Sanford, FL32771  
Toll-Free: (888) 652-1555  
Local: (407) 878-0880  
Fax: (407) 878-0837  
[WWW.BOSSLASER.COM](http://WWW.BOSSLASER.COM)

## Windows Installation

---



1. Launch the installer executable located on your BOSSLASER USB flash drive
2. Windows may ask if you trust the software, as LightBurn is not currently digitally signed
3. Select if you would like to create a desktop icon
4. Click *Install*
5. Click *Finish*

That's it! Locate the LightBurn icon to launch the program

## Mac/OSX Installation

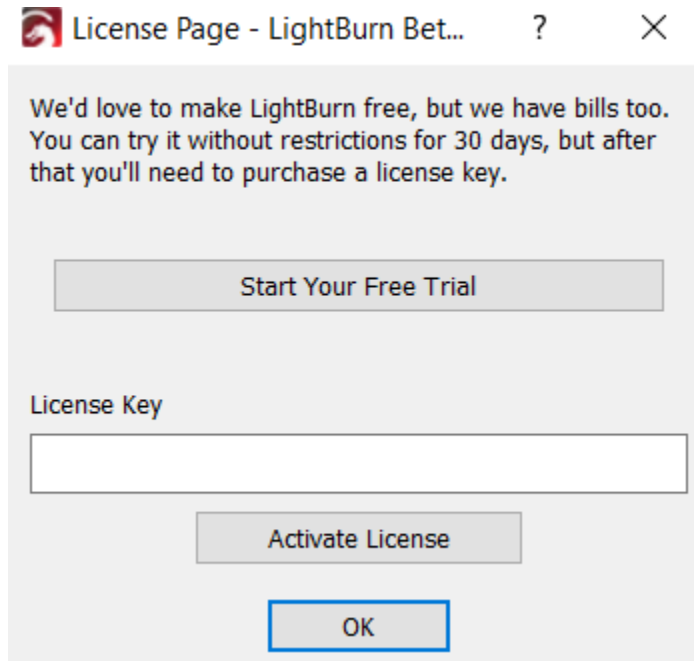
---

1. Locate the DMG (disk-image) file on your BOSSLASER USB flash drive
2. Double-click the .zip file to extract the DMG (disk-image) file
3. Double-click the LightBurn.dmg file to mount it
4. Drag the LightBurn application into your applications folder
5. Launch LightBurn from the launcher as normal
6. You can now eject the DMG file (drag it to the trash bin)

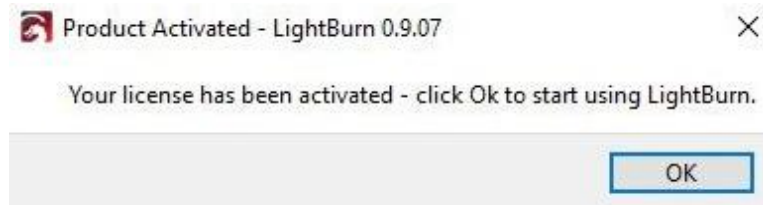
# Entering your License Key

When you first start LightBurn you will be prompted to enter your license key or start your trial version. If you do not have a license key you can click the *Start your Free Trial* button to begin your 30-day unrestricted trial of the software.

If you have your license key, enter it in the License Key box and click the *Activate License* button.

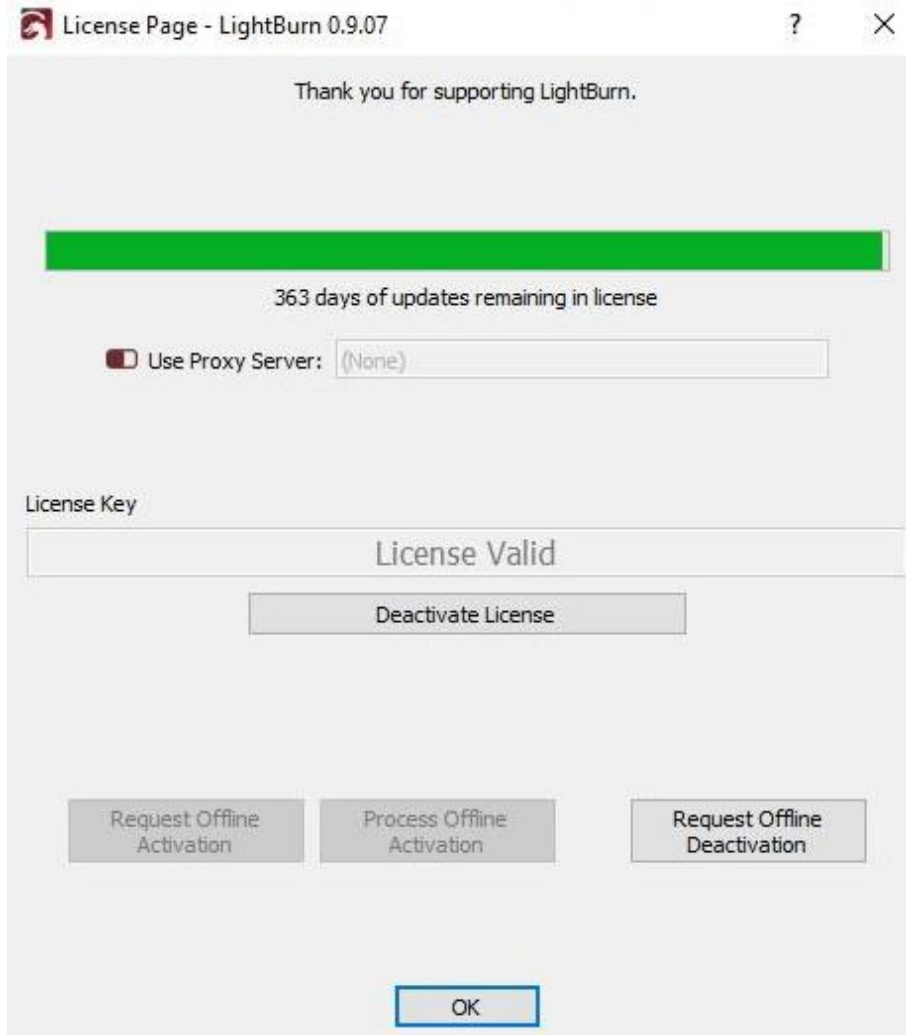


Once you enter and activate a valid license key you will be prompted to restart LightBurn for the license to take affect.



## Checking your license status

You can check your license status at any time or enter a new license key by clicking Help > License Management



# Installing USB Drivers

Before installation the USB Drivers for your PC, please have the machine on and connected to your PC via USB cable. Locate your Boss Laser USB Flash Drive that was provided to you in the USB case.

Plug this into your PC that is also connected to the machine that is currently on.

Now open the Boss Laser USB Flash Drive and locate the **LaserWORKS v8.01.28** folder (as shown below):

Name	Date modified	Type	Size
LaserWORKS v8.01.28	12/13/2019 4:08 PM	File folder	
RDWorks com driver	12/13/2019 4:08 PM	File folder	
LightBurn Manual.pdf	11/27/2019 1:05 PM	PDF File	6,944 KB
LightBurn.V0.9.10.dmg	3/19/2020 1:08 PM	DMG File	24,210 KB
LightBurn-v0.9.10.exe	3/19/2020 1:08 PM	Application	46,979 KB
TeamViewer_Setup.exe	12/10/2019 1:47 PM	Application	25,371 KB

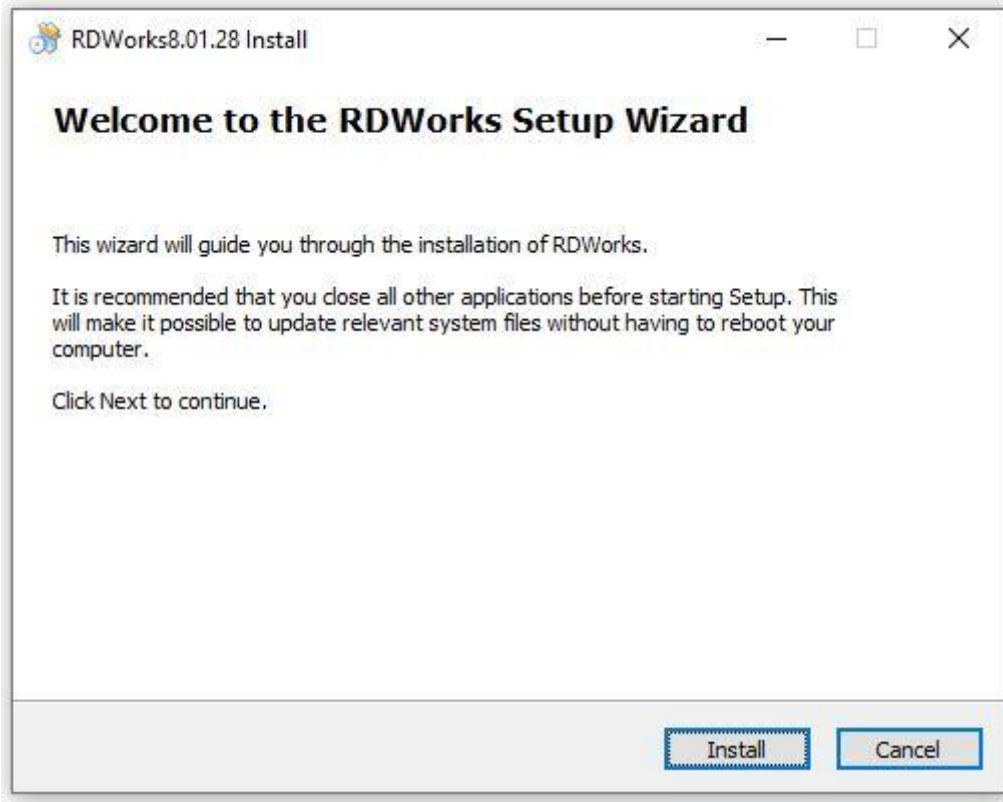
Open the LaserWORKS v8.01.28 folder and the application to run the installation will be located here (as shown below):

Name	Date modified	Type	Size
CFG	12/13/2019 4:08 PM	File folder	
Info	12/13/2019 4:08 PM	File folder	
Lang	12/13/2019 4:08 PM	File folder	
Res	12/13/2019 4:08 PM	File folder	
RDWorksV8Setup8.01.28.exe	12/4/2017 2:25 PM	Application	8,438 KB

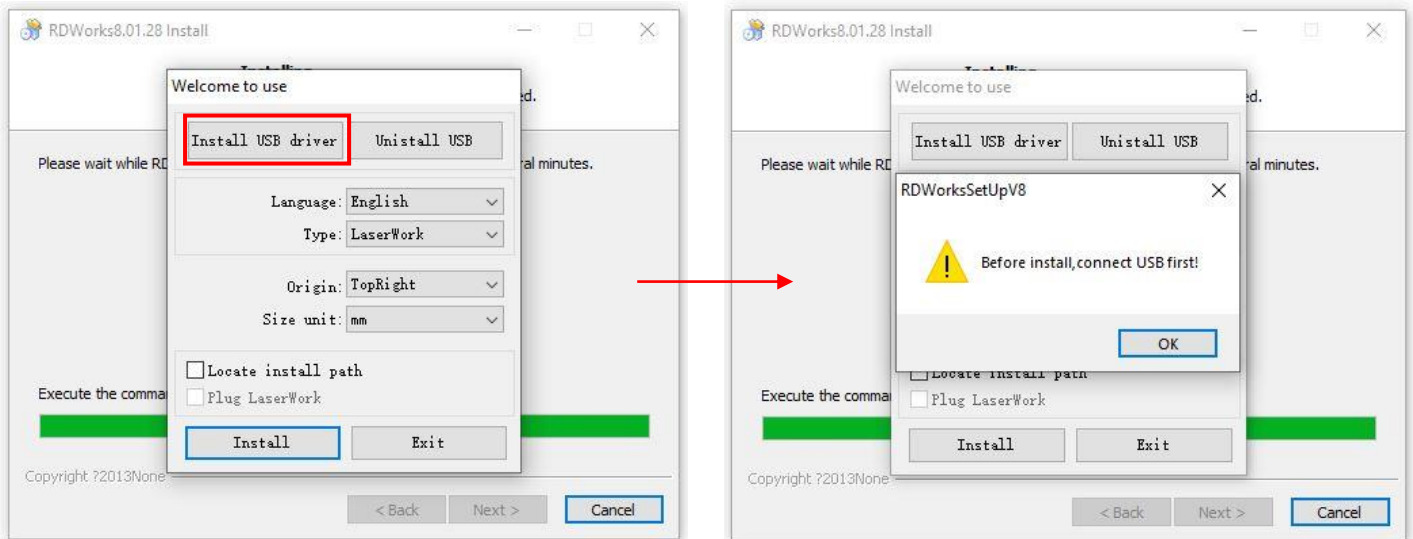
Run the **RDWorksV8Setup8.01.28.exe** application.

# INSTALLATION OF LIGHTBURN FOR HP MACHINES

The window below will appear after running the installation. Click on **Install**.



Next, click on **Install USB Driver** to install the necessary USB drivers for your machine on your PC. A progress bar will show during the installation **AND make sure the progress bar is filled all the way through (to 100%)**. If it doesn't, please make sure the USB cable is connected fully from the controller card and to the PC and run the USB driver install again.



Once the USB Drivers have been successfully installed, close out of the LaserWORKS v8 installation and open the **LightBurn software**.

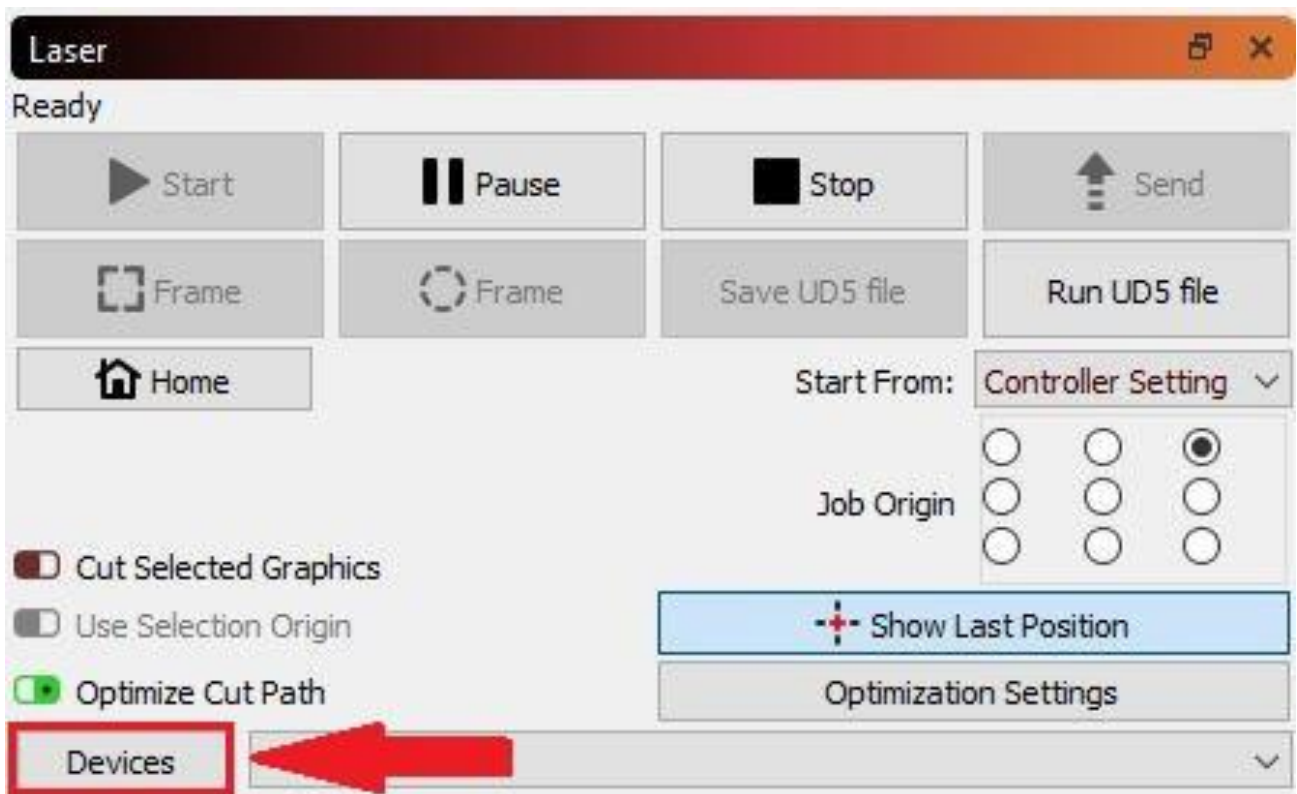
# Device Setup

If you've never run LightBurn, the first thing you need to do is set up your machine layout (work area size and zero / origin) in the settings, and then add your device type in the devices box. If you have more than one type of laser / device, you can add more than one and choose a default. At present, the layout and page size aren't associated with the device, but this will be changed to that in the future.

## Adding a new device (Laser)

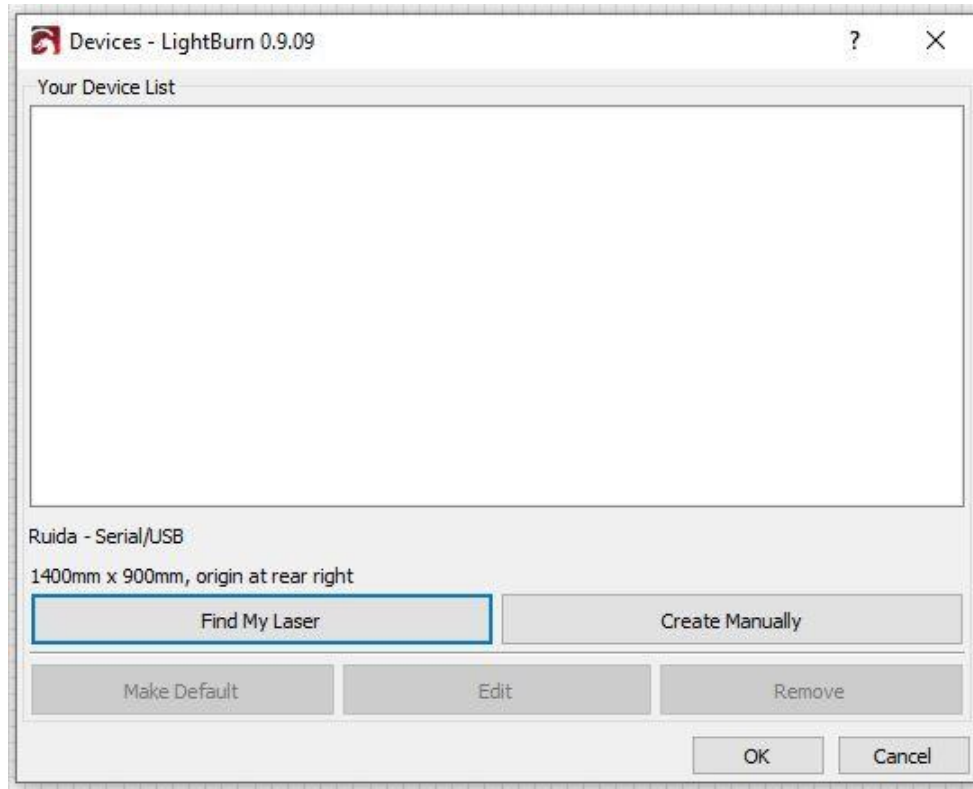
If you've never used LightBurn before, you'll need to tell it a couple things about your hardware to get going.

1. In the lower-right of the display is a box called "**Laser**" - on the bottom of it is a button called "**Device**" (as shown in red with the arrow pointed to it):



## INSTALLATION OF LIGHTBURN FOR HP MACHINES

2. Click the **Find my Laser** button (highlighted in blue, below):



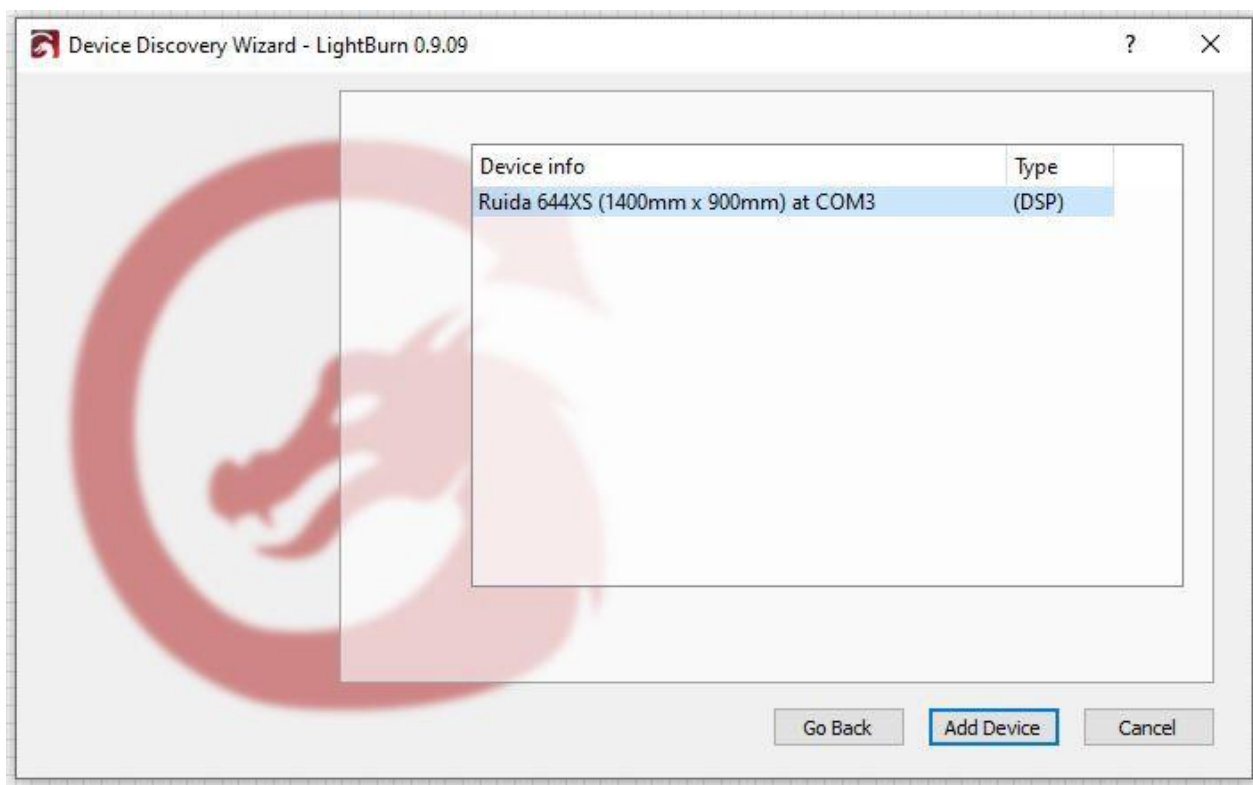
3. The Device Discovery Wizard should appear (as shown below). Click the **Next** button for LightBurn to automatically search for your machine:



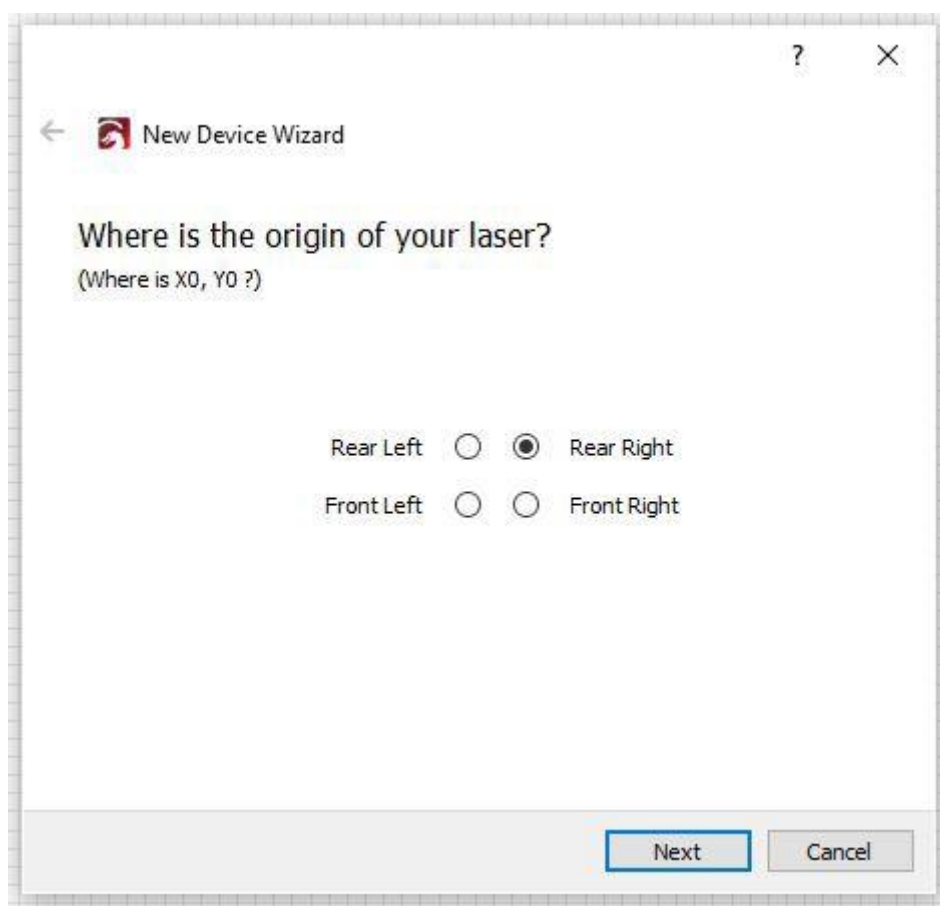


## INSTALLATION OF LIGHTBURN FOR HP MACHINES

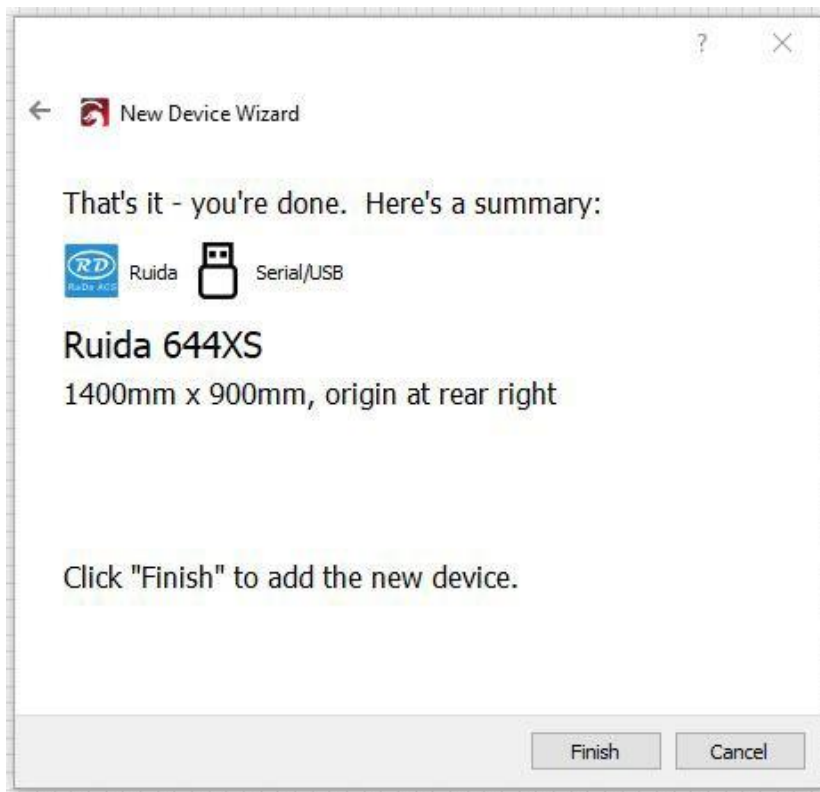
4. Once the Device Discovery Wizard has finished, your machine should now be listed under **Device info**. For this example, the **LS-3655** machine is connected to the PC. Select this device and click the **Add Device** button (highlighted in blue):



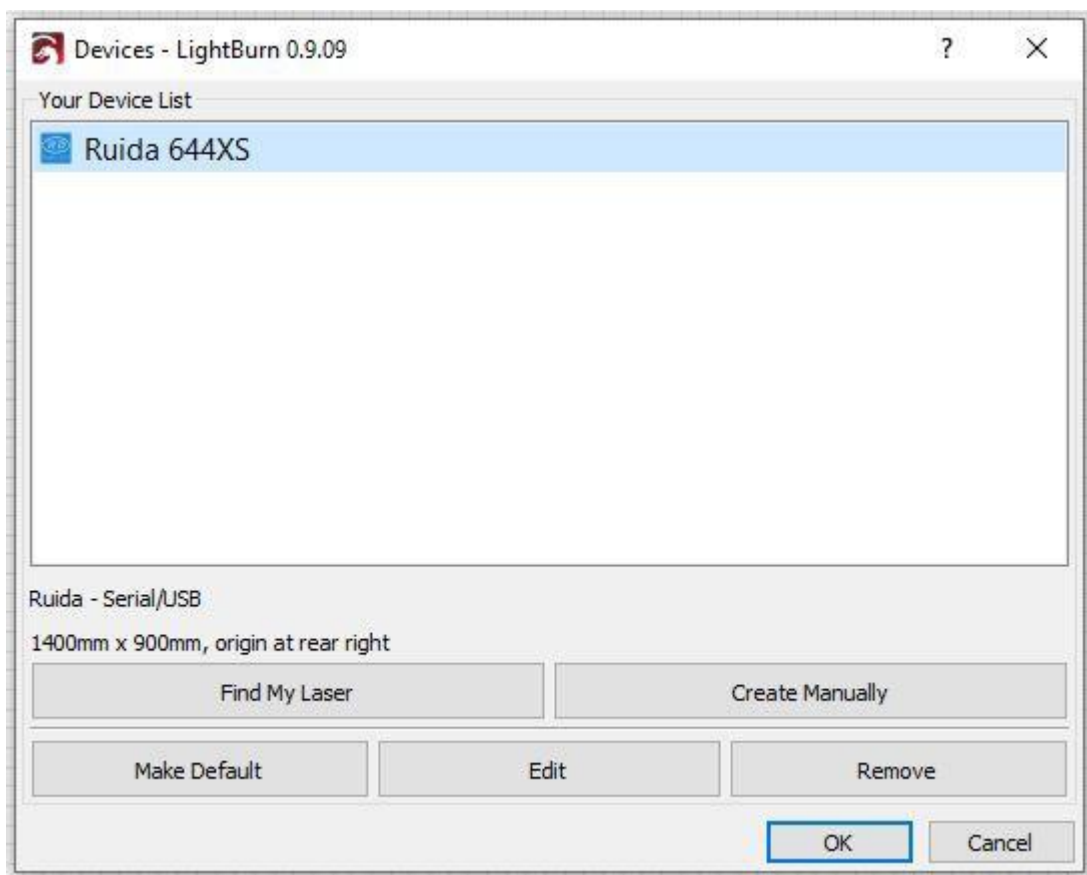
5. Now select **Rear Right** for the origin of your laser. The reason why we choose this is because the machine's DATUM point is located at the top right of the machine.



6. Click **Finish** to add your laser machine to LightBurn.



7. For our LS-3655 example, our machine is listed as shown below. Select this device, then click on OK.



**You have now successfully setup your machine with LightBurn!**